

Points of Interest:

- The Sign Sagittarius
- Astrological Keywords
- Birth Chart Analysis
- Tarot Spread Example
- Membership Room
- Stellarian Honor Guard
2nd Quarter 2012

Inside this issue :

Astrology: Sagittarius	1
Sagittarius Insights	1
Stellarian HG	2
Editorial	3
Dominant Sagittarius: David Carradine	5
Elections 1948	9
Tarot Correspondence	10
Tarot Sample Spread	11
Archetypes: The Heptad	12
Conference 2013	14
Membership Room	17
Vision Statement	20

Quarterly



Volume 87 Issue 4

Fall 2012

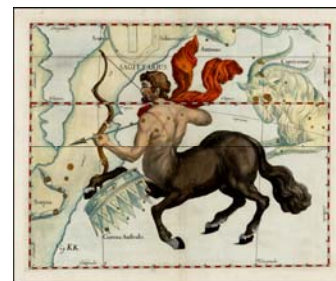
Astrology — Sagittarius

By Christopher Gibson

Sagittarius, Latin for Archer, is the ninth sign of the zodiac. Sagittarius is surrounded by the constellations of Scorpio, Capricorn, Ophiuchus, and Corona Australis. Sagittarius is located in the southern celestial hemisphere near the galactic center. The Milky Way is densest here; therefore, Sagittarius has more known planetary host stars than any other constellation. The constellation of Sagittarius is

best viewed in the night skies of the summer months, where it appears more like a teapot than a centaur.

In the Tropical Zodiac, the Sun enters Scorpio 60 days after the Autumnal Equinox; this is approximately 240 days after the Sun enters Aries on the Vernal Equinox. Annually, the Sun passes through the Tropical sign of Sagittarius November 22—December 21. In Sidereal Astrology, the Sun is in Sagit-



Sagittarius, Johannes Hevelius, 1687

tarius December 16 through January 14. Taking up almost exactly 30 degrees on the elliptic, the Sun currently

(Continued on page 4)

Sagittarius Insights —The Rainbow Bridge

By Meg Dissinger

“True Religion is the Discernment of the Divine Plan and a Conscious Cooperation in its Fulfillment.”

Spiritual Astrology—C. C. Zain

As a mental health practitioner, the bridge has great significance. In *Spiritual Astrology* Zain refers to “The Rainbow Bridge/ The Bridge of Bright Promise.” What that means to me as a therapist who works within the context of symbolism and archetype is profound. One of my treatment tools is sand. This type of therapy is called Sand Play.

I have a special sand box and shelves of toys for my clients to use in the sand. This kind of therapeutic treatment is an archetypal journey the client makes into their own psyche toward healing. My abilities to read and interpret the scenes the client creates are greatly enhanced because of the knowledge I have gained through my studies here with the Brotherhood of Light.

There is always a point in the therapy where my clients will start using bridges. It is always

(Continued on page 8)

Stellarian Honor Guard

For the period between April and June 30, 2012

Regular Contributors form the solid foundation from which The Church of Light can grow. This column honors those who financially support the work of spreading the Religion of the Stars. Guardian Angels contribute more than \$500 in a quarter. The Stellarian Honor Guard includes those who contribute between \$100 and \$500 per quarter. We are grateful for your generous contributions to The Church of Light.



Guardian Angels

Anonymous
 Donald & Barbara Baker
 Paul & Vicki Brewer
 Adriana Donofrio
 Margaret Joscher
 Shirley & Bob Hall
 Patrick & Radine Ramsey
 Roland & Dorothy Wissler

Stellarian Honor Guard

Anonymous
 Glenda Ayach
 Patricia Beard
 Keith Benjamin
 Deborah Bevard
 Barrington Bowen
 Neil & Norma Cantwell
 Steve & Bessie Carrothers
 Meg Dissinger
 Leonard P. Fletcher
 Christopher Gibson
 Gale Gorman
 Rick Grigg
 Douglas Heimbichner
 Johanna & Gerald Howard

K. Paul Johnson
 Barbara Kniffen
 Roxy Jo Loring
 Robert Jesse Lusignan
 Omari Martin
 Dean McArthur
 Elizabeth Jane Moore
 Alfred Bird Bear Obes LR
 Veiga & Phil O'Sickey
 Michelle Berry Robbins
 Wendy Rook
 Sylvia Setzler
 Barbara Sibley
 James A Targett
 Peter Tourian
 Robbie Vaughn
 Ron Waller
 Timothy Wycislak
 Deborah Yaffee

Regular Contributors

Anonymous
 Seraphena B Aswell
 Victor Battaglia
 Paul Bergner
 Claudia Clark

Tiniqua Frizzell
 Margaret Garofano
 Kimberley Harris
 Thomas Higgins
 Joseph David Hill
 Paul Klamer
 Shane H Koch
 Babaji Latosisa
 Gladys S. Marks
 Allyn McCray
 Jacquelin R. Mintal
 Deborah Orr
 Randahl Purchase
 Samara Rivett
 Michele Roumell
 Evelyn Sacko
 Pamela A Sirtak
 Dudley Slade
 David M. Songster
 Patricia Tatro
 Marianne Thalken
 Joan Titsworth Marsteller
 Fern Tucker
 Jerry Venable
 Roger Lee Wicks



Fall Issue 2012
 ISSN: 009-6520
 Vol. 87, No. 4
 PUBLISHED BY
 The Church of Light

EDITOR
 Christopher Gibson

PRODUCTION MANAGER
 Barb Kniffen

COPY EDITOR
 Radine Ramsey

The Church of Light Quarterly is the official publication of the Church of Light. It includes educational and inspirational supplements to The Brotherhood of Light Lessons.

There are four issues per year: Winter, Spring, Summer and Fall.

Directors:

Paul Brewer, President, NM
 Margaret Joscher, VP, CA
 Vicki Brewer, Secretary, NM
 Dave Carrothers, Treasurer, NV
 Donald Baker, NY
 Christopher Gibson, NM
 Patrick Ramsey, NM

Honorary Directors:

Allan Curthoys, New York

Communication Director:

Allyn McCray

For Quarterly Submissions:

If you wish to submit material to the Quarterly, please write or call for guidelines.

Please address all communications to:
 The Church of Light
 2119 Gold Ave SE
 Albuquerque, NM 87106-4072
 tel: 505 247-1338
 fax: 505 814-7318
 Email: churchoflight@light.org

Editorial

By Christopher Gibson

"It is in the compelling zest of high adventure and of victory, and in creative action, that man finds his supreme joys." - Antoine de Saint-Exupéry

In Africa, some 5 million years ago, our human ancestors diverged from our closest primate relative, the chimpanzee. Around 200,000 years ago, anatomically modern humans, Homo-Erectus and Homo-Sapiens, began moving across the landscape into most ecological niches around the world from the tropics to the Arctic. Humans made a great leap forward around 50,000 years ago when we attained behavioral modernity, the cultural traits that separate us from the other primates and make us uniquely human. It was around 10,000 years ago that humans moved from being primarily hunter/gatherers to augmenting their dietary needs with crop cultivation and the domestication of animals. The practice of sedentary agriculture, which gave birth to city-states and modern civilization, commenced a mere 6,000 years ago.

From the above timeline one can see that during the last 3% of our time here on the planet as a species, humans have lived a sedentary existence. The preceding 97% of our history was spent on the move, foraging for our subsistence. Throughout our human history, as a species we have had to struggle for existence in the midst of an unstable and constantly changing environment. The life of our foraging ancestors would have been a continual adventure while following wild herd migrations and collecting seeds and fruits as they seasonally matured over a variety of eco-zones. Our evolutionary experience has encoded us to seek out new experiences and to crave adventure. When these are lacking, boredom and ennui set in.

In the chapter titled "How to be Happy" in the book *Occultism Applied*, C. C. Zain states

"Routine engenders a feeling of mediocrity, and this fails to bring happiness. But change, if there is an element of uncertainty about it, or if it brings the individual into contact with new conditions, gives rise to a feeling of self-expansiveness. In a manner the individuality has extended itself, and feels the thrill of a larger existence."

Pictured as half man/half horse, the sign of Sagittarius, featured in this issue of the Quarterly, is also the sign of adventure. Our happiness is dependant, in part, on having adventure, spontaneity, and a break from our routine existence. For the majority of us, adventures do not always have to be bold, risky undertakings with unknown outcomes. We can increase our feelings of aliveness and break up mediocrity and stagnation by consciously incorporating smaller adventures into our lives on a daily, weekly, or monthly basis. Try driving a different way to work. Or, perhaps, skip going to that familiar restaurant; instead choose a place you have never been. My favorite is leaving one day out of the month unstructured. I spontaneously decide that morning to either take a drive, or visit a museum or part of town that perhaps I have never been to before. In the spirit of the sign Sagittarius, try playing tourist in your own town. No doubt there are still places you have thought about going but have never visited. Make life an adventure; for greater opportunities for joy and well-being await those willing to embrace the new and the different.





Sagittarius Associations

Thought-Series: I See
 Ruling Planet: Jupiter
 Best Quality: Loyalty
 Worst Quality: Sportativeness
 Talismanic Gem: Red Garnet
 Color: Lighter Purple
 Musical Tone: High A

Sagittarius Figures

Academician, advertising agent, airline worker, athletic instructor, author, coach, comic, customs broker, exporter, facilitator, foreign correspondent, importer, international banker, journalist, lawyer, lecturer, media specialist, minister, personal trainer, pilot, professor, publicity director, rodeo-clown, teacher, tour guide, travel agent, travel-writer.

Positive Sagittarius Traits

Adventurous, alert, articulate, attentive, candid, casual, charitable, cheerful, communicative, curious, devout, direct, eloquent, encouraging, enthusiastic, ethical, exploratory, frank, funny, generous, honest, humorous, inclusive, independent, informal, informative, inquisitive, insightful, inspirational, intelligent, jovial, knowledgeable, laid-back, liberal, lofty, loyal, lucid, observant, optimistic, perceptive, philosophical, playful, scholarly, sincere, spiritual, spontaneous, straightforward, talkative, tolerant, truthful, uncomplicated, upbeat, verbal, witty.

Negative Sagittarius Traits

Aloof, arrogant, blunt, boisterous, caustic, callous, condescending, disruptive, evangelizing, excessive, fanatical, flamboyant, flashy, garrulous, inconsiderate, immature, imperious, impractical, insensitive, know-it-all, lackadaisical, lacks discretion, laissez-faire, long-winded, loquacious, ostentatious, piercing, pious, pompous, practical joker, prankster, pretentious, proselytizing, rambling, restless, rowdy, rude, sarcastic, sermonizing, snobbish, squandering, standoffish, tactless, thoughtless, unkind, unrealistic, unruly, unstructured, verbose, wasteful, wild, wordy, zealous.

(Astrology: Sagittarius Continued from page 1)

passes through the constellation from December 18—January 18.

In Near Eastern astrology Sagittarius was depicted as a man armed with bow and arrow. The Greeks synthesized the astrology of the Babylonians and Egyptians into the form we know today and introduced the Centaur, a mythological being comprised of the torso of man attached to the body of horse, to represent Sagittarius.

In mythology, centaurs were represented as either raucous carousers or teachers and healers, such as the famed centaur Chiron. The dual nature of these liminal beings has them torn between their animal appetites and more civilized behavior. Thus, Sagittarians can span the extremes of character from rampant party animals and sports enthusiasts to spiritual seekers and philosophers. Because this duality can often be found in conflict in the same person, I jokingly describe Sagittarians as “base sensualists with high aspirations.”

Nowadays, centaurs are about as easy to observe in nature as unicorns. Therefore, to gain insights into Sagittarius' character we must study their closest relatives - horses. Horses are precocial animals. Within hours of their birth foals are able to stand, walk and prance about. Similarly, Sagittarians make for independent children and they strive for self-sufficiency as adults. Wild horses are neither territorial nor attached to a specific place. Instead, they are nomadic in nature. Consequently, those persons with the sign of Sagittarius prominent in their horoscope tend to be nomadic and migratory, and are found roaming the world.

Horses are not monogamous, and therefore Sagittarians have a hard time choosing a partner and settling down. When it comes to love and other opportunities in life Sagittarius is always looking for greener pastures.

Contrary to the image of Sagittarians being solitary loners, horses are completely social animals that form families called harem bands and communities called herds. When young stallions are expelled from the herd by dominant males, they form bachelor bands like roving youth gangs. If separated from

(Continued on page 5)

(Astrology: Sagittarius Continued from page 4)

the herd, mustangs do not live long – it is possible that they die from loneliness. Giving birth is the only thing a mare does alone.

Of all the signs of the zodiac, Sagittarians most like to be in one another's company. Lea Riffle, a former president of the Church of Light, once joked about this herd-like affinity that Sagittarians feel towards each another as a Mutual Admiration Society. Horses will fiercely defend their group. Likewise, the best trait of Sagittarius is loyalty, they will stand by those persons and causes they believe in most.

Along with Aries and Leo, Sagittarius belongs to the element of Fire. The fire signs all express with enthusiasm, leadership and authority. In the wild, mustangs can be seen to change leadership seasonally. Occasionally, dominant stallions will yield to dominant mares. Similarly, Sagit-

tarians are adaptable, and unique among the fire signs if they sense a power vacuum they will grasp the reigns of leadership; however, they are happy to defer to another if they perceive that person has greater abilities than they do.

Sagittarius also belongs to the Mutable Quadruplicity which includes Gemini, Virgo and Pisces. With the exception of Virgo, each of the other three mutable signs expresses duality: Gemini, the Twins, Pisces, the Twin Fish, and Sagittarius, half man, half horse. In *Astrological Signatures*, C. C. Zain describes the mutable signs as, "a happy medium between the excessive activity of the movable signs and the stubborn resistance of the fixed signs."

Ruled by the religious planet Jupiter, Sagittarians tend to be jovial, upbeat, happy-go-lucky, generous, and optimistic. They can even be die-hard optimists who look for the silver lining to every dark cloud. The Jupiter association also bestows upon some Sagittarians a profoundly spiritual nature. They move through life on an eternal quest

Dominant Sagittarius Personality: David Carradine

By Christopher Gibson

David Carradine, the American film and television actor, was born in Hollywood, California, on December 8, 1936, to Ardanelle "Abigail" McCool and actor John Carradine. Although his given name was John Arthur Carradine, as a child he was called Jack. Carradine's parents had a volatile relationship, and each repeatedly re-married. He was the result of his mother's second of three marriages, and his father's first marriage of four. His tumultuous childhood included an attempted suicide by hanging, at age 5, when he discovered that his older brother Bruce had a different biological father. His parents divorced, when he was age seven, in 1944. The ensuing series of court battles over child custody and alimony had young Jack bouncing back and forth between New York and California. His childhood was also

divided between boarding schools, foster homes and a brief stint in reform school. After graduating from high school, Carradine studied drama and music theory at San Francisco State College.

In 1960, Carradine was inducted into the US Army, despite his attempts to dodge the draft. In 1961 he was court-martialed after being caught shoplifting from a base grocery store. Later, after a two-year tour of duty, he was honorably discharged. Carradine helped to establish a theater company which became known as the entertainment unit while he was stationed at Fort Eustis, Virginia.

Upon leaving the Army, Carradine changed his name and began to seriously pursue acting. In 1964, after several minor television roles, Carradine made his feature film debut in



David Carradine from the 1970's television series *Kung Fu*

(Continued on page 6)

(Continued from page 5)

the western *Taggart*, based on a novel by Louis L'Amour. Carradine won a Theatre World Award for Best Debut Performance in 1965, for his role in the Broadway hit *The Royal Hunt for the Sun*. In 1966, he returned to LA to star in the TV western, *Shane*. His best-known role was in the TV western *Kung Fu*, where he played Kwai Chang Caine or "Grasshopper", a mixed race, Shaolin monk. This three-season series, which spanned 1972–1975, helped to popularize Eastern philosophy and martial arts for a western audience. Carradine would reprise the role of Kwai Chang Caine in the 1986 *Kung Fu: The Movie*. Carradine later starred in *Kung Fu: The Legend Continues*, while also serving as executive producer and director. The show ended in 1997, after a run of 4 seasons, and 88 episodes. During his acting career, which spanned over four decades,

Carradine starred in more than 100 feature films, spanning a variety of genres that included action-adventure,

documentary, drama, horror, martial arts, science fiction and westerns. He was nominated for four Golden Globe Awards.

Carradine had a reputation for getting in trouble. In addition to being court-martialed for shop-lifting, he was arrested for assaulting a police officer, possession of marijuana, attempted burglary and malicious mischief (while under the influence of peyote), and on more than one occasion for driving under the influence of alcohol.

Carradine followed in the footsteps of both his parents with multiple marriages. On December 25, 1960, he married his high school sweetheart, Donna Lee Becht. She gave birth to their daughter, Calista in April of 1962. They divorced 6 years later in 1968. Carradine met actress Barbara Hershey in 1969, and they began a six-year domestic partnership which included the birth of their son, Free, in 1972. Much to the disappointment of his father, Free would later change his name to Tom. After his relationship with Hershey dissolved in 1975, he was briefly

(Continued on page 7)

PLANETS

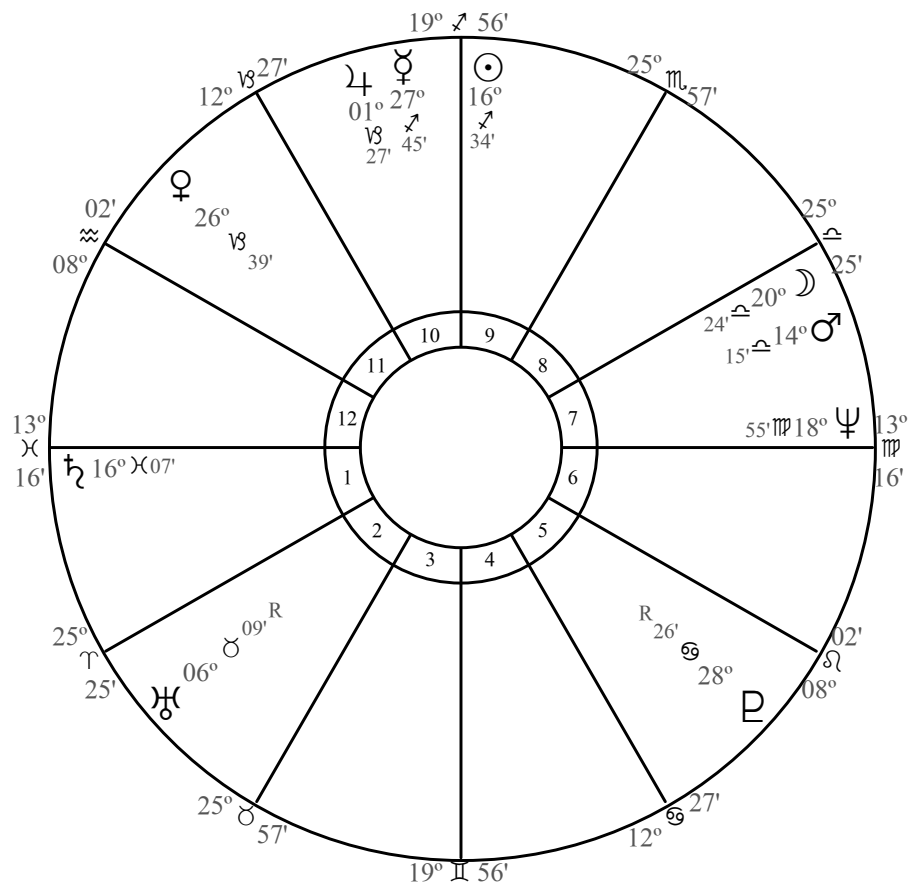
	Power	%	Harmony
MC	101.06	14.2	-9.44
☉	87.07	12.3	-16.02
♀	71.42	10.1	15.86
♁	67.60	9.5	-13.53
♃	60.18	8.5	32.32
♅	57.11	8.0	-34.36
♄	54.40	7.7	-38.69
ASC	52.26	7.4	-29.58
♃	50.25	7.1	13.37
♄	49.72	7.0	4.39
♂	31.02	4.4	3.92
♁	27.61	3.9	4.71
	709.70	100.0	-67.06

HOUSES

	Power	%	Harmony
10	241.58	23.1	52.41
7	162.98	15.6	-19.37
1	135.98	13.0	-68.78
9	111.72	10.7	-18.42
11	98.62	9.4	-3.48
5	92.46	8.8	-11.33
6	43.53	4.2	-8.01
2	43.12	4.1	6.67
3	35.71	3.4	7.93
8	35.71	3.4	7.93
4	25.12	2.4	6.68
12	20.50	2.0	-8.49

SIGNS

	Power	%	Harmony
♈	268.46	25.6	4.06
♉	158.80	15.2	28.84
♊	135.98	13.0	-68.78
♋	116.45	11.1	16.23
♌	92.46	8.8	-11.33
♍	82.24	7.9	-27.68
♎	63.32	6.0	12.64
♏	43.53	4.2	-8.01
♐	25.12	2.4	6.68
♑	24.66	2.4	-2.40
♒	20.50	2.0	-8.49
♓	15.51	1.5	1.96



(Continued from page 1)

an important point in the therapeutic process when the bridges appear. It is the point where I know, and the client begins to experience, that a link has been created between the conscious and unconscious expression of Self, the link which joins the person on a conscious level to their authentic self. It is the point at which the person begins to integrate and accept their wounds rather than just being a wounded soul. It is at this point where I imagine that Chiron, mentioned in *Spiritual Astrology*, comes to my aid as I hold the sacred space for healing to occur. Zain mentions Chiron; a Centaur who is also commonly known as The Wounded Healer. He is half man, half horse, a union of physical perfection and the noble mind.

The Constellation Sagittarius shows us a Centaur with his bow drawn. This bow signifies many things to us: rainbows, which bring pots of gold in some lore, or in my neighborhood, just the witness of the majesty of Nature at her most beautiful; horseshoes, bringing good fortune to those who find them; the actual archer's bow itself, that when drawn and released offers protection and sustenance; the bridge which spans dangerous waters and chasms and brings humans safely to their destinations. All these are brought to mind when we consider the Archer's bow.

There is a brilliant message in the text of Sagittarius, represented by this bow, this Rainbow Bridge, which spans the gulf between the Physical world and the world of Spirit. In order for us to become whole and authentic beings, we must be able to travel easily between the rational-emotional mind and the intuitive-higher mind. The building of a strong link or bridge between these two is the message of the bow of bright promise. We have the means within us to manifest the movement between our two selves; that means is represented by Sagittarius—our involvement in philosophical and religious pursuits; taking journeys which bring us greater enlightenment; continuing our education in order to learn as much as possible; engaging in physical pursuits which challenge our bodies; using our hard won knowledge and power to make this earth a better place for all humanity.

The Rainbow Bridge provides a link between what we think about as the lower mind and the higher mind. We can consider this in terms of the natural opposite signs of Gemini and Sagittarius. Gemini and its ruler, Mercury, represent the process of thinking and logic. Sagittarius, and its ruler Jupiter, represent what happens

when the material gathered is transformed and transmuted into higher purpose. The fact that Mercury and Jupiter are alchemical antidotes reinforces the importance of the link between them. In order for us to manifest any idea on its highest level, we must be able to integrate the logical side of the presented information; then be able to move easily from the logic to the intuitive.

This leads us to the concept of the bridge between the emotional body and the intuition. Each of us manifests an emotional nature that is either expressed or repressed. We certainly understand that if not expressed, the emotional energy will find a way out into the world. When we are in touch with our emotional nature, when we are expressing that nature in healthy and positive ways then our intuitive nature will peak. Through breathing and induced emotion, we can strengthen the electromagnetic body to the benefit of our higher education. This is the power of both breath and the electromagnetic body to serve as the bridge to bring us into contact with Spirit and Truth.

The Rainbow Bridge is the means by which we transport the materials we need to build our strong astral bodies. We must establish a path between our personal desires and the desires of the Higher Self. This is a choice of Sagittarius and ninth house matters. This is making the decision to surrender what we are and what we know to the Higher Good. This is taking the plunge, making a choice to let go of what we think is best and allowing the bigger "I" to use us and our energy for the benefit of the group, the benefit of Universal Welfare. This is the "SURRENDER DOROTHY" of the journey, the point at which we make the conscious choice because we have investigated and are certain that this surrender will lead to a better world for all. This is the point at which we take the lessons of Mercury and the logical mind to make the application of Faith through our love of that which is the Higher and more Noble Purpose. We build the Bridge of Bright Promise into the world of Spirit as it manifests here on earth. This leads us to the text in *Spiritual Astrology*: "True Religion is the Discernment of the Divine Plan and a Conscious Cooperation in its Fulfillment."

From a sermon presented at The Church of Light, Albuquerque, NM, November 2006, by Rev. Meg Dissinger.



The 1948 Elections: History in the Making

By Dennis Sutton

Hermetic astrology has a long history of discovery and innovation and during the Golden Age of Astrology (1924-1950) there were more discoveries than in the previous 2,000 years. In 1946 the innovation or development of the astrodynes – a way of measuring the power, harmony or discord of each planet, aspect, sign and house in a birthchart – was a history making moment. They revolutionized the astrology of the ancients and invited Hermetic astrology to actively participate in the age of measurement.

1948 was a presidential election year in America. Roosevelt had navigated the nation through the aftermath of the 1929 Wall Street Crash and the destruction of World War II, but on April 12, 1945 he had departed his tired, worn body and Harry S Truman had taken the reins. So in the October 1948 issue of *The Rising Star* Elbert Benjamine took the opportunity to assess Truman's performance. He detailed his progressions since taking office and concluded: 'What is significant is that these harmonious progressed aspects coincided with the quick ending of the war, with high wages and full employment, with no financial depression. There have been many difficulties, but to the moment this is written, no major catastrophe.'

Harry S Truman had authorized the dropping of atomic bombs on Hiroshima and Nagasaki and then he set about reconverting America to a peacetime economy. But in 1948 the Democratic Party was in turmoil. He won renomination, but was thought to have little chance of reelection. His opponent in the presidential contest was Republican Thomas E Dewey. Dewey had political experience. He had been elected Governor of New York in 1943 and had run against Roosevelt in 1944. And with the Democratic Party's three-way-split Dewey looked unstoppable.

During September and October, 1948, both candidates hit the campaign trail. Truman, no longer flavor of the month, embarked on a whistle-stop campaign across the country blaming the Republican Congress for most of the nation's woes. And Dewey, the popular favorite, took a safe, guarded approach. He was cautious and wanted to appear as non-partisan as possible. And in a matter of weeks, on the first Tuesday in November, the voters would go to the polls to elect their President.

Meanwhile, back in Los Angeles, Elbert Benjamine had decided to do something that had never been done before. He and William Drake had developed the astrodynes in 1946 and now it was time to test them out on the November 3, 1948 Presidential election. And in the August, September and October issues of *The Rising Star* they presented the birthcharts of both contenders with their astrodyne measurements and the results these measurements forecast.

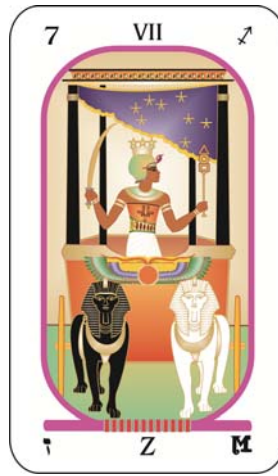
Back then, the integrity of birth data was not an issue like it is today, but both contenders had data that was accepted by astrologers as accurate. This is mentioned because the accuracy of the astrodynes and what they predict depends on a very accurately timed chart and neither Truman nor Dewey had a birth time with that level of accuracy.

Both charts are presented in *The Brotherhood of Light* lessons – Dewey's in Course 4 with the notation 'Data, February-March 1938, *Today's Astrology* magazine'; and Truman's in Course 18 with the note: 'Data given by a member of the family.' Truman's time of birth – 4.00pm – was also given in his biography, 'The Rise to Power' by Richard L Miller, so it will be close, but some rounding off has occurred. So, while there's some uncertainty with the accuracy of the birth times and charts, back then Elbert Benjamine was only interested in one thing.

When you apply for a job the key factor influencing your success is the tenth house in your birthchart. Progressed aspects to this house add harmonious or discordant energy to the tenth house thought-cells in your unconscious mind and they work to get the job or not: And it was the harmony or discord being added to the tenth house thought-cells as indicated by the progressions in Truman's and Dewey's charts that Elbert Benjamine was interested in. It would reveal who had the best tenth house and who would get the President's job. It was a simple two-house race and it was the colossal number of harmodynes possessed by Truman's tenth house that made accurate prediction possible.

(Continued on page 13)

Tarot Correspondence—The Conqueror



Divination

“Expresses in the spiritual world, the septenary dominion of spirit over matter.

In the intellectual world, the sacerdocy and the empire.

In the physical world, submission of the elements.”

Admonition

“Remember, then, son of earth, that the empire of the world belongs to them who possess the sovereignty of spirit, that is to say, the light which makes clear the mysteries of life. If the Conqueror should appear in the prophetic signs of thy horoscope, it signifies that in breaking through obstacles thou wilt crush thy enemies; and all thy wishes will be realized if thou attack the future with audacity, armed in the consciousness of thy right.”

Astrology

“Astrologically, Sagittarius is pictured as the starry Centaur, with bow full drawn, indicating its combative qualities and its locomotion. Sagittarius is a dual sign, adapting itself to both scepter and sword. It is natural ruler of philosophy and travel; its chief mental characteristics being obedience to ruling authority, discipline, prompt decision, self-control and the power to command others. The conservative attributes are well represented by the cuirass; and the other qualities are all symbolized in detail by the various pictured emblems of Arcanum VII.”

Excerpts from *The Sacred Tarot* by C. C. Zain

Tarot Spread Example—The Yes or No Spread

Christopher Gibson



Tarot Spread Interpretation

The Querent asked, “How will my seasonal business do this Fall?”

Card Spread

- 1) The distant past—Six of Scepters (Reversed), this is read as “music, art or the drama; its inner interpretation is **AMBITION**.” The querent has a seasonal arts and crafts business.
- 2) The recent past—Horseman of Swords (Reversed), In discussing the horsemen C. C. Zain says, “they are read as thoughts or intelligences that have an influence upon the life of the client.” The Querent was disappointed with the previous year’s sales.
- 3) The present—Queen of Coins (Reversed). ““The Queen of Coins signifies a person ruled by the sign Libra; good, high minded, noble and amiable. ... reversed it indicates a Libra man. The dominant idea is **BALANCE**.” The Querent, who has Libra prominent in his horoscope, is juggling three jobs and worried about maintaining balance in his life.
- 4) The future—Eight of Swords (Reversed), is read as “...loss of honor, or business failure; its inner interpretation is **EXPERIENCE**.” The seasonal arts business is dependant on being accepted into specific

community art events. It is possible that he will learn last minute that he has not been juried in.

- 5) The distant future—Six of Coins is read as: “a social event; its inner interpretation is **REPRESSION**.” It appears that the Querent may make money at some of the craft festivals but not be accepted to all events.

Summary

The Yes or No spread is comprised of five cards laid out from right to left. Cards 1 and 2 represent the past of the matter, the center card represents the present, and cards 4 and 5 symbolize the future. Right-side-up cards represent a yes answer, and reversed cards no. Each card is worth the value of one point for yes or no, with the exception of the center card, which has the value of two points. In this spread, three of the cards were reversed, including the center card, indicating a no answer.

The Querent was advised that he would probably feel stressed and ambivalent around the sales opportunities for this season. There could even be some last-minute disappointments or scheduling conflicts. Nevertheless, some money will be gained, and the events he does attend will be very social.

Numbers as Archetypes: The Heptad - Divine Virgin

By Scenza *

We come next in our analysis of the ten archetypal numbers to the number seven, the Heptad. Even a casual glance at various world religions and myths reveals copious references to the sacred seven. Seven is seen as a holy, pure number, and is always referenced on the side of truth and right.

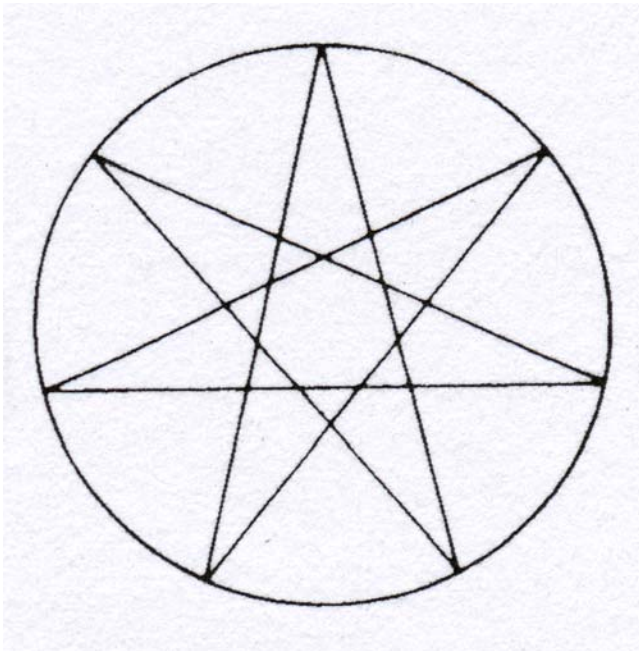
There are several reasons for the association of the Heptad with these ideals, some of which will be discussed in this article. An important consideration deals with two very simple mathematic equations: $3 + 4 = 7$; and $3 \times 4 = 12$. This close relationship between 7 and 12, as both being comprised of 3 and 4, is crucial to an understanding of the Heptad's symbolism.

The Triad, in one of its senses, can be taken as the inner, spiritual essence. In this sense, it represents the Spirit. Similarly, the Tetrad is often associated with physicality and Matter. The Heptad, then, represents the perfect, balanced fusion of Spirit and Matter. The symbolism of the Dodecad (12) is similar. However, for reasons which will be revealed shortly, the Heptad is taken to represent the hidden, esoteric side of creation, while the Dodecad symbolizes the manifest, exoteric perfection of creation. Another way of expressing this is to say that the Heptad represents the non-physical *process* of generation, while the Dodecad represents the physical *result* of that process.

Of all the numbers in the Decad, the one which is said to be most similar to the perfect Monad, symbol of God and the source of all things, is the Heptad. Like the Monad, it is "virgin", in the sense that no other number within the Decad enters into it evenly (e.g., as 2 enters 4, or 3 en-

ters 6). It is also called "childless", in that the Heptad cannot produce any other number within the Decad through multiplication (as 2 produces 4, or 3 produces 6 and 9). Also, interestingly, of all the numbers between 1 and 9, the Heptad is the *only* number which cannot divide 360, the number of degrees in a circle, regularly. Hence, in truth, it is never possible to draw a perfect heptagon. The ancients took this as an eternal reminder of the presence of Spirit in matter- omnipresent, eternal, elusive, and yet very real.

Music, colors, astrology, tarot, alphabets, and myriad other fundamental precepts all involve the Heptad in their explication of natural phenomena. Seven notes of the musical scale move our souls, and then repeat at a higher octave. Seven prismatic colors combine to produce white light. The movements of seven inner planets are analyzed more carefully in personal Astrology, as the outer planets move so slowly that they are largely taken into account generationally. All of these systems and more reveal a seven-fold process by which things come into and go out of being.



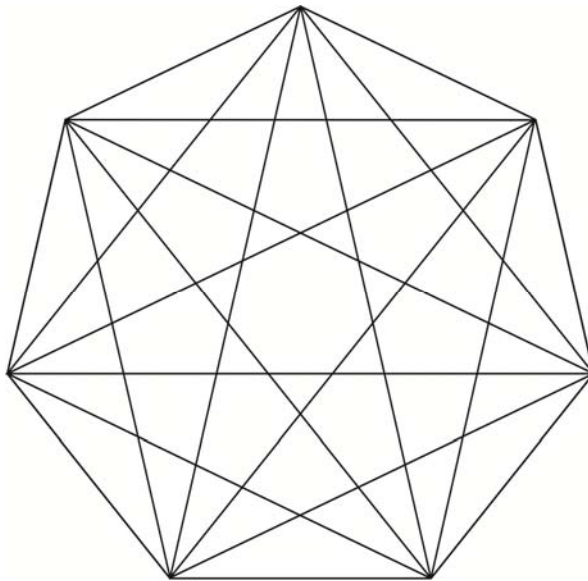
In his work, *A Beginner's Guide to Constructing the Universe*, Michael Schneider (1994) explains the legendary monochord experiments of Pythagoras in great detail. However, the entirety of this discussion is beyond the scope of this article. Interested readers are referred to this riveting, profound, yet understandable treatment of the field of Sacred Geometry. Summarizing, however, the discovery and invention of the diatonic musical scale, which

(Continued on page 13)

(Continued from page 12)

forms the basis of all Western music, reveals rather than imposes the natural sounding of 12 musical tones over a span of seven octaves. Once again, we see the natural unfolding of 12 products through a seven-fold process.

For all of these reasons and more, the Heptad was held in the highest esteem by the ancient mathematical philosophers. Eternal, elusive, occult, it represents the pure and perfect fusion of our spiritual and material selves. It reminds us of a greater Reality which gives rise and reason to our physical world. It portrays our essence, our core, our unifying Spirit.



References:

Iamblichus. (1988). *The Theology of Arithmetic*. (Robin Waterfield, Trans.). Grand Rapids, MI: Phanes Press.

Schneider, M. (1994). *A Beginner's Guide to Constructing the Universe*. New York, NY: HarperPerennial.

Zain, C.C. (1994). *The Sacred Tarot: The Art of Card Reading and the Underlying Spiritual Science*. Los Angeles, CA: The Church of Light.



(*For personal and professional reasons, Peter Tourian will henceforth write under the pen name "Scenza".)

The 1948 Elections: History in the Making—continued

(Continued from page 9)

So, after doing all the calculations and crunching the numbers, Elbert Benjamin made his prediction in the July-August 1948 edition of *The Rising Star*. He informed the Church of Light membership that Harry S Truman had a net tenth house harmony of 143.67 harmodynes and that Thomas Dewey only had a small fraction of this number. (Truman had birthchart Jupiter and progressed Sun, Mercury and Venus in the tenth house and Dewey had no birthchart planet and no progressed planet in the tenth.) So, based on the numbers, Elbert Benjamin predicted Truman would win.

Then on election-day all interest focused on the print and electronic media as they reported the latest voting trends and predictions. And virtually every prediction (with or without public opinion polls) indicated that incumbent President Harry S Truman would be defeated by Republican Thomas E Dewey. But it turned out to be the greatest election upset in American history. Harry S Truman won. It's been called many things, including 'the astonishing election', and the Chicago Daily Tribune's headline on Novem-

ber 4, 1948 read 'Dewey Defeats Truman.' It couldn't get it right even after the event.

So, when all the political commentators and all the pollsters got it wrong, Elbert Benjamin got it right. In the December 1948 issue of *The Rising Star* he explained. 'The various pollsters said Dewey had the election in the bag. But Dewey had no progressed planet in the tenth house, the house of getting the job....and Truman had birthchart Jupiter and major progressed Sun, Mercury, Venus and Jupiter in the tenth. Why Truman won the election is set forth mathematically in detail on page 42 of the July-August *Rising Star*, where it is shown that on election-day he had the tremendous net harmony, for his house of election (tenth) of 143.67 harmodynes.'

For the first time ever Elbert Benjamin employed harmodynes to predict the winner of an American Presidential election. He measured the tenth house harmony in the birthcharts of both candidates and, defying popular opinion, was the only astrologer to predict a Truman victory. It was a history making moment.



Convention 2013—The Alchemist's Laboratory: Transforming Your Everyday Life



Three-headed Mercurial
Dragon

tion is also a great opportunity to meet like-minded people who share your interest in astrology, alchemy, and tarot.

Pre-conference Tours

For those of you who are planning to make New Mexico your vacation destination, we have planned two exciting day trips. On Wednesday, June 19, 2013, we will be taking a scenic train ride from Albuquerque to Santa Fe on the Rail Runner. Santa Fe bears the distinction of being the oldest capital city in the United States. When it was founded in 1608, Santa Fe was originally called La Villa Real de la Santa Fé de San Francisco de Asís (The Royal Town of the Holy Faith of St. Francis of Assisi).

There are more than five museums and scores of art galleries all within walking distance of the downtown Santa Fe Plaza. The Palace of the Governors, built in 1610 atop the ruins of an Indian pueblo, is the oldest continuously occupied public building in the U. S. and houses history



Rail Runner to Santa Fe

The 2013 Church of Light Convention, "The Alchemist's Laboratory: Transforming Your Everyday Life" will be held June 21-23, 2013, in Albuquerque, New Mexico. This fun-filled and informative convention includes preconference tours and two full days of speakers focusing on the captivating topic of Alchemy. You will discover how you can unlock its ancient secrets and apply them in transforming your life. The 2013 Church of Light Con-

vention is also a great opportunity to meet like-minded people who share your interest in astrology, alchemy, and tarot. and art exhibits. The New Mexico History Museum is the newest museum in Santa Fe and has wonderful interactive exhibits on the state's history. Built in 1917, The New Mexico Museum of Art displays changing exhibitions of the state's remarkable collection of regional art. The Governor's Gallery, displayed on three levels of the State Capitol building, features the work of prominent New Mexican artists. The Museum of Contemporary Native Arts (MoCNA) is the country's only museum for exhibiting, collecting and interpreting the most progressive work of contemporary native artists. The Georgia O'Keeffe Museum is dedicated to Georgia O'Keeffe (1887-1986), one of the most significant artists of the 20th century, and her contemporaries.

Eating out is a major pastime in Santa Fe, which features dozens of restaurants with high-profile chefs as well as more affordable options. We'll break up the day's journey with a delicious lunch within walking distance of the plaza. After lunch there will be time to break into groups for shopping or additional museum visits. At end of the day we will return to Albuquerque on the Rail Runner. The fees for this excursion will be paid individually. For budgeting purposes, a round-trip day pass on the train is approximately \$10, Museum admissions average about \$10 per site, and lunch should be less than \$20.



Sandia Crest, elevation 10,678 feet.

Thursday, June 20, 2013, is not for the faint of heart, as we will travel to the top of Sandia Crest aboard the Sandia Peak Tramway. At 2.7 miles long, this is the world's third longest single span tramway. Over this distance the gondolas ascend over 4,000 feet. The average speed of the tram car is 12 mph, and the length of the ride, called a flight, is approximately 15 minutes. The Sandia Crest towers above Albuquerque at an elevation of 10,678 feet. The mountain is home to the Sandia Mountain Wilderness

(Continued on page 15)

(Convention continued from page 14)

Area, part of the Cibola National Forest. As a result of the great

change in elevation from the base of the mountain to the crest, as well as changes in temperature and amount of precipitation, we will travel through four different eco-zones. At the top of the mountain, we will hike through Alpine forests and meadows, enjoying numerous varieties of native wildflowers that bloom at this time of year. At the top of the crest, is High Finance Restaurant, which will provide lunch for our outing. The group-rate fee for round-trip passage on the tram and lunch is \$38. This will be payable in advance, as this trip requires reservations. We hope you will join us for these two exciting day trips.



Sandia Tram



2009 Pre-conference Intensive

Pre-conference Intensive

On Friday June 21, a pre-conference intensive titled The Alchemy of Progressions, facilitated by professional astrologer Christopher Gibson, will be offered for \$45 as a fundraiser for The Church of Light. In this three-hour workshop, which will be held from 9:30 a.m.—12:30 p.m., the participant will learn how to read a progression report in order to determine upcoming trends in one's life. Each registrant will be taught how to look at his or her chart from the perspective of what patterns in consciousness might be stimulated under particular progressed aspects. Special attention will be placed on harmonizing discordant planets and aspects using affirmations, visualizations, environmental factors and behavioral changes.

Initiations

Initiations are a highly anticipated feature of our conventions. Church of Light



Initiations 2007

Initiations are when members are formally inducted into the organization, as well as marking grade and degree changes. This inspiring ritual will be officiated by Hermetician members of The Order of the Sphinx on Friday evening, June 21. Please let us know if you would like to participate in the Ritual of Initiation by checking the appropriate box in the registration form. If you have any questions about your eligibility or grade level, feel free to contact us at headquarters.

Convention

We have an exciting group of speakers and topics in the planning stages for 2013, some of whom will be presenting for the first time at a Church of Light Convention. A few of the proposed presentations are:

- Mercury, Sulphur and Salt
- The Alchemy of the Alphabet
- The Planets as Symbolized in the Metals of Alchemy
- The Use of Talismanic Gems, Metals, Colors and Environments
- Identifying Alchemical Imbalances Using Astrodynes
- Transmuting Your Progressed Aspects

Costume and Dance Party

Stellarians know how to have a good time, and no conference is complete without a party. Saturday night's Awards Banquet will be followed by a "Hogwart's Reunion Costume Ball". This will be a night to remember. For 2013 we are negotiating with Clan Tynker, a magical family circus, for an evening of entertainment.



2011 Awards

Best Western Rio Grande Inn

This year's conference will be returning to the Best Western Rio Grande Inn located in Albuquerque's historic Old Town district at 1015 Rio Grande NW. This classic Southwestern inn offers warm hospitality, cool drinks, and excellent regional cuisine. It is within walking distance to unique shopping, dining, galleries, and museums. A com-

(Continued on page 16)

(Continued from page 15)

plementary shuttle is available to transport you to and from the Albuquerque Sunport, Old Town Plaza, the Indian Pueblo Cultural Center, and the Bio Park. The Church of Light has secured a special group rate for our members and friends who plan to attend our convention June 21-23, 2013. The Best Western Rio Grande Inn has graciously offered our attendees the same discounted room rate of \$89 plus tax per night that was offered in 2011. Our special group rate is also valid three days before and two days after our event for those who would like an extended stay in New Mexico. To make your hotel reservations, call 1.800.959.4726 or, locally, 505.843.9500. When making your reservation, please identify yourself as a member of The Church of Light in order to receive our group discount. The Best Western Rio Grande Inn provides compli-



Best Western Rio Grande Inn

mentary shuttle service to and from the Albuquerque International Airport from 7:00am to 10:00pm daily.

Conference Registration

The incredibly low rate of \$175 includes both days of workshops, lunch buffet for Saturday and Sunday, the Friday night reception, and the Awards Banquet. Single day attendance is available for

\$110. Additional guests who are not attending the convention can join you at the Awards Banquet for \$40. Friday's preconference workshop on The Alchemy of Progressions is offered for \$45 as a fundraiser for The Church of Light.

For detailed updates on our convention plans, please visit the 2013 Convention page on our website: www.light.org



Delineation with Astrodynes

Six consecutive Thursdays September 13—October 18, 6:30—8:30 p.m. MDT

Astro means star and *Dyna* means power. Astrodynes, a means of determining the relative amount of power, harmony, and discord in any chart, are the result of independent research conducted by Church of Light students around the world during the 1930's and 40's. The results were sent to headquarters in Los Angeles where they were analyzed by Elbert Benjamin (aka C. C. Zain) and compiled into the system we know today.

The objective of astrodynes is to determine the volume of power held by each of the planets, signs, houses, and aspects in a chart, and how to quantify that power by a percentage relationship to the rest of the chart. Areas of personal power express as our most prominent characteristics or personality traits, and tend to represent the areas of life to which the individual feels most naturally impelled. These dominant energies represent the more dynamic stellar structures in our souls and correspond to our predominant trends in thought, feeling and experiences.

In this six-week course, which will fall on consecutive Thursdays, the participant will learn how to read an astrodyne report, in order to determine the relative power, harmony and discord of each planet, sign, house and aspect in a chart. Each week we will look at the charts of celebrities and notables for whom we have accurate birth data as sample charts for developing our delineation skills. The student will also have the opportunity to apply the technique of astrodynes to their own chart and identify key patterns in their own consciousness.

For students outside of Albuquerque, the class will be offered live, online, and archived for later viewing. There is a suggested donation of \$12 per class or \$60 for the six-week series.

Instructor: Christopher Gibson

Membership Room



The Weekly Beacon

Would you like to receive weekly up-to-date information about Church of Light activities, events and special offers via email? If so, either go online to www.light.org and register as a member and choose “yes to be notified” or send us an email to churchoflight@light.org with your request.

We'll be happy to add you to the Weekly Beacon contact list.

Follow us on Twitter and Facebook ...

Ali McCray, CofL Communication Director, has created a Facebook page and Twitter feed for the Church of Light and its members. If you're interested, make friends with the Church Of Light and add your comments or subscribe.

For more information contact: ali@light.org

Members Seeking Contact in Their Area

The following Church of Light members are seeking to make contact with like-minded students in their region:

Idris in Sanford, Florida: darinsel@gmail.com

Gloria in Hudson, Ohio: mgwilliams08@gmail.com

Shane in Independence, Missouri: process-server@live.com

Sarah in Texarkana, Texas: Sjlemley@aol.com



In Memoriam—Wendall M. B. Haas

Born March 16, 1923, 1:34 p.m. Seattle, Washington

Died February 18, 2012, Birmingham, Alabama at age 88

Wendall was a Hermetician and Certified Teacher. He taught many students who attended Church of Light classes in Los Angeles in the 1970's.

Membership Room

The Annual Church of Light Business Meeting

will be held at
 Church of Light Headquarters:
 2119 Gold Avenue SE
 Albuquerque, NM 87106-4072
 Friday November 16
 at 6:30 p.m. MST

if you plan to attend by conference call please contact
 Church of Light Headquarters for details
 or watch for more information in the weekly Beacon

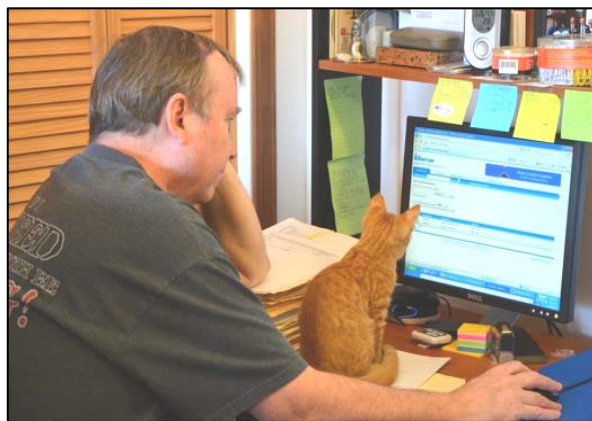
Sponsorship Program

The Church of Light offers a Sponsorship Program for financially disadvantaged members. Sponsors agree to financially assist a member in their C of L studies by donating their membership fee, lessons, and the exam processing fee as the student studies the lessons and passes exams.

To remain in the sponsorship program, an enrolled member must pass an exam once every six months with a grade of 75% or better. The next course is mailed only upon completion of the previous course.

There are always more members wishing to be sponsored than we have sponsors.

If you are interested in anonymously sponsoring a member in need, please contact our Membership Minister, Rev. Patrick Ramsey, at drpat@prodigy.net or call the office Monday, Tuesday or Thursday from 9:30 a.m. –5:30 p.m. Mountain Time at 505-247-1338.



Patrick Ramsey (and assistant Tigger)

Volunteer Opportunities—The Order of the Sphinx

The structure of The Order of the Sphinx is based upon the Head, Body, Paws, and the Wings of the Sphinx. Each division has specific mandates and is headed up by its own Section Advisor. The Wings of the Eagle, the Scorpio section of The Order Of The Sphinx, focuses its efforts on the area of personal development. Since 2005, the Wings Section has primarily included long-distance members. We communicate by email on various topics such

as: our personal favorite lessons, discoveries of intuitive abilities, and insights on the expression of progressed aspects. On occasion, some of us have shared detailed delineations of one another's charts. All Members of the Church of Light are welcome to send new ideas for the Wings. If you have a psychic-development experience you wish to share with us, contact Renee Huval at hualrenee@gmail.com

Membership Room

Sunday Services and Roundtable Discussions



Paul Brewer



Vicki Brewer



Meg Dissinger



Yvette Fortin

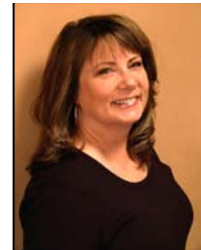


Christopher Gibson

Participate with us live in at Church of Light Headquarters in Albuquerque, New Mexico or online at: www.light.org

Astrological Meditations

A discussion group facilitated by Veiga O'Sickey is held on the First Sunday of the month at 11 a.m.



Allyn McCray

What is Hermetica?

Join Yvette Fortin on the Second Sunday of the month at 11 a.m. for an overview of Hermetic studies



Veiga O'Sickey

Religious Services

Join our ministerial team consisting of Paul Brewer, Vicki Brewer, Meg Dissinger, Christopher Gibson, Allyn McCray and Radine Ramsey on the Third Sunday of the month at 11 a.m. for our monthly religious service



Radine Ramsey

Fort Worth, Texas, Activities



The Fort Worth Center offers Brotherhood of Light classes on the first and second Tuesdays of the month from 7-9 p.m. Religious services are held on the third Sunday of the month at 11 a.m.

A schedule for the upcoming year is available on their website at:

owlswebnest.com.

All classes and services are held at:

Owl's Clover Bookstore
3037 James Avenue
Fort Worth, Texas
817-921-5809

THE CHURCH OF LIGHT

2119 Gold Avenue SE
Albuquerque, NM 87106-4072

Non Profit
Organization
US Postage Paid
Albuquerque, NM
Permit No. 1322

RETURN SERVICE REQUESTED



Building A Better World With A Better Vision! The Church of Light Vision For the 21st Century

OUR MISSION:

To promote Universal Welfare and the exaltation of humankind through the teaching and practices of the Religion of the Stars as outlined in the writings of C.C. Zain.

GUIDING PRINCIPLES:

A loving Cosmic Intelligence, of which we are all a part, whose infinite goodness guides us through undeviating natural law.

A Divine Plan manifests through progressive evolution in which each soul has a unique and important role.

A soul is completely moral when to the maximum extent of its abilities it adheres to the universal moral code: Contribute Your Utmost to Universal Welfare.

The realization of the soul's Mission and the attainment of Self-Conscious Immortality is the goal toward which each soul moves.

Love is the way to life. Unselfish Love alone makes immortality possible.

Through the proper exercise of one's mentality using Directed Thinking and Induced Emotion, it is possible to control one's own life and destiny, both here and hereafter.

Astrology is the Golden Key that unlocks the door to understanding the Soul's true character and potential.

The safe development of extrasensory perception (Extension of Consciousness) is the best tool for realizing each individual's mission in the Divine Plan and for verifying the survival of the soul after death of the physical body.

Religion is the sister of Science, and it evolves by incorporating new information as it is discovered and verified.

OUR VISION FOR THE 21ST CENTURY:

We are a powerful force for good and for spiritual enlightenment and expand the reach and experience of our members because:

We provide reliable and verifiable information regarding the nature of the soul and its relationship to Deity and other life forms;

We seek out reliable and verifiable information regarding life on higher planes of existence, especially in regard to the transition we call death and the nature of the next life;

We develop increasingly advanced tools and training in astrology, extrasensory perception, directed thinking and induced emotion toward the end of maximizing each person's happiness, usefulness and spirituality;

We promote the importance of the four essential freedoms: Freedom from Want, Freedom from Fear, Freedom of Expression and Freedom of Religion;

We build a sense of community and spiritual purpose which uplifts and inspires our members to Contribute Their Ut-